

Repair Instructions

Replace an ED330 Controller in a Thermoline water bath



To suit: TWB-12D/24D/48D with ED330 controller

Approvals		
Written By:	Reviewed By:	Approved By:
Darren Assey	Darren Assey	Duncan Smeaton

Safety Reminder

These instructions do not purport to address all potential safety issues, if any, associated with the product's use. It is the responsibility of the user of these instructions to establish appropriate safety and health practices and determine the applicability of regulatory limitations before use.

Before attempting any of the following, perform the actions listed below:

- Turn OFF power to the machine.
- Unplug the machine.

Summary

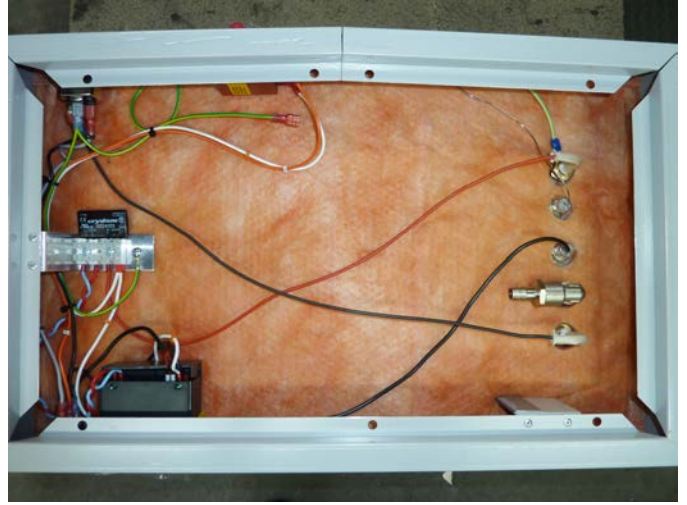
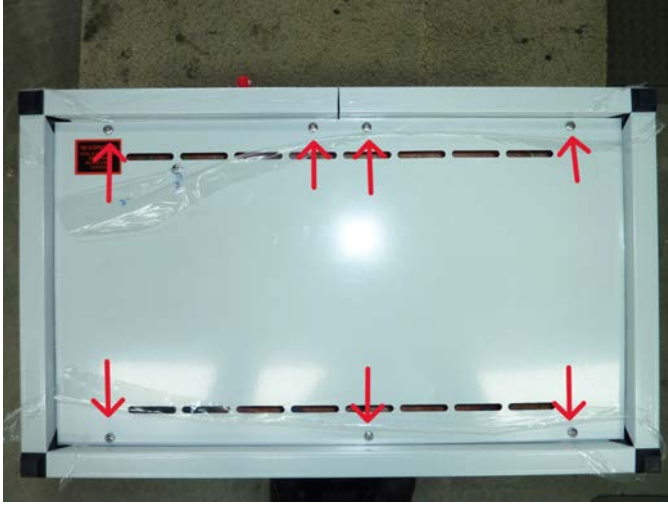
These instructions are for replacing a ED330 controller in a Thermoline water bath with a new ED330 controller. Please note that all electrical work must be performed by a suitably licensed and trained technician.

Tools Required	
Screw Driver	Phillips Head
Screw Driver	Flat Head

Kit Contents		
Item	Description	Quantity
62208	ED330A Controller Relay Output SSR	1

Section 1: Preparation

Turn off the power at the GPO and unplug the bath. Drain and dry the bath.



Turn the bath upside down which will allow you to remove the screws holding the base plate in place. Remove the base plate exposing the electrical components.

Section 2: Remove



To access the wires at the rear of the ED3300 controller, remove the black the plate by pushing the locking tabs. This will disconnect the back plate and allow access to the screws holding all the wiring in place.

Using a screwdriver, remove the fixing screws holding the sensor and thermostat wires in place and disconnect the wires



After removing all the wires, press the tabs inward on the yellow clips that hold the controller in place. This will allow the yellow clips to slide off the back of the controller. Once the clips are removed, the old controller can slide out of the front panel of the bath.

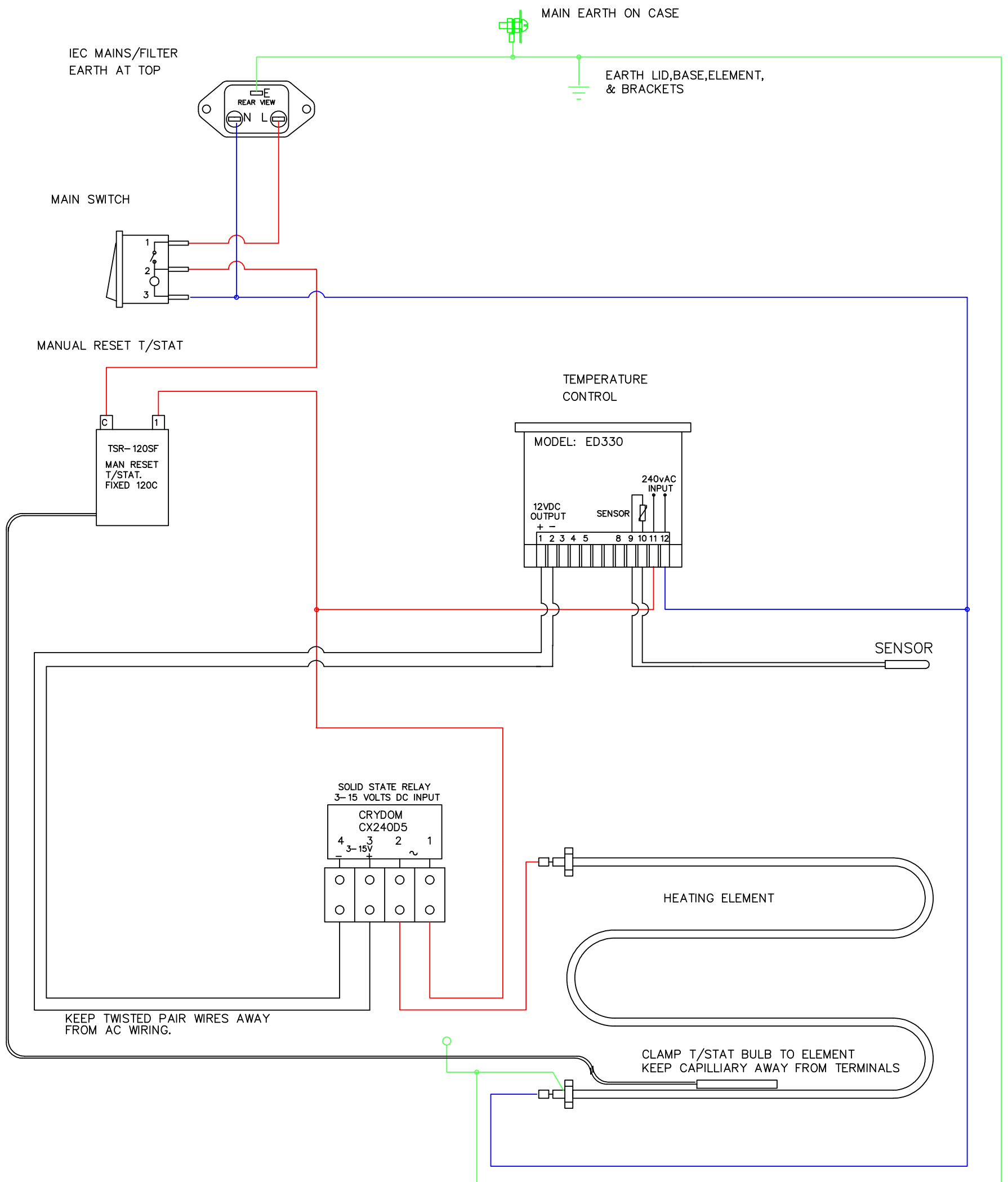
Section 3: Installation

Insert the new controller through the front panel of the water bath. Slide the yellow clips back onto the controller all the way to the front to hold it in place.

Note: Please ensure that you insert the controller with the wiring sticker facing the insulation (up when the bath is oriented correctly).

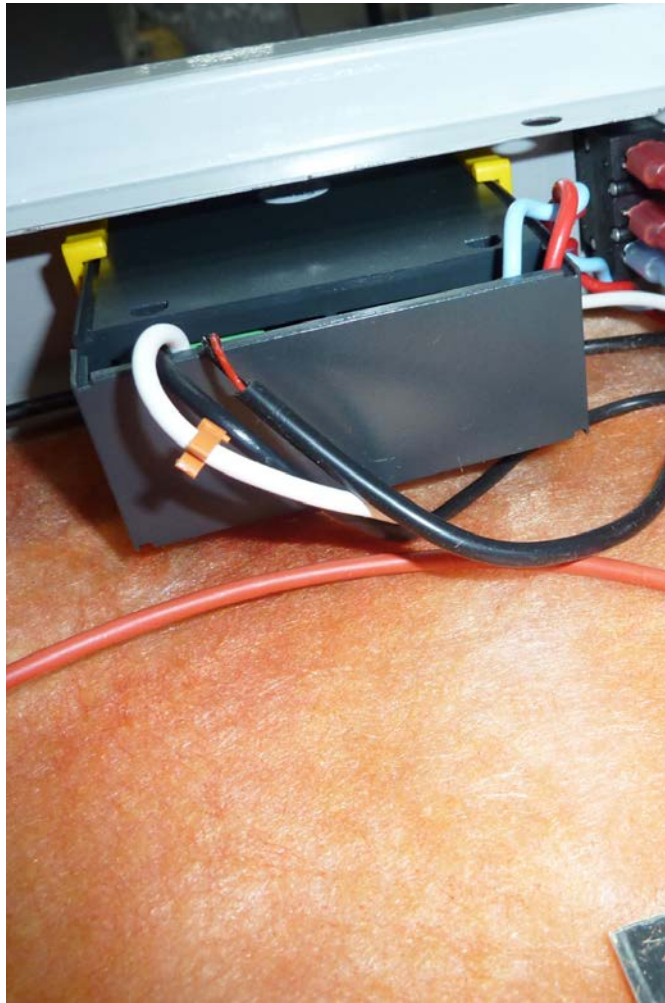


Remove the black plate on the back of the controller. Follow the wiring diagram to reattach the wiring.

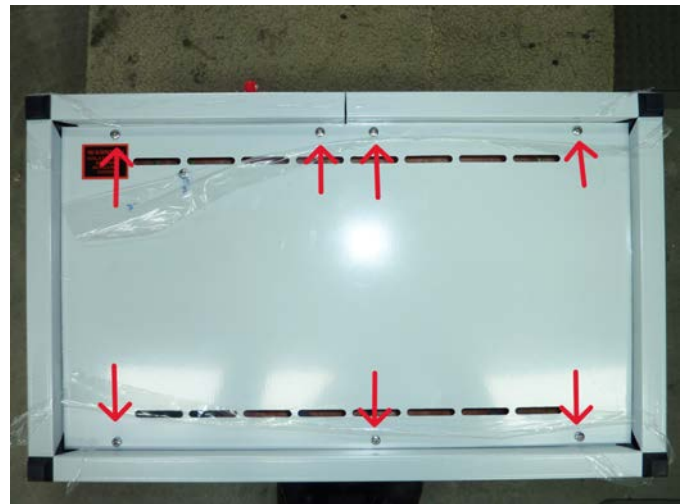
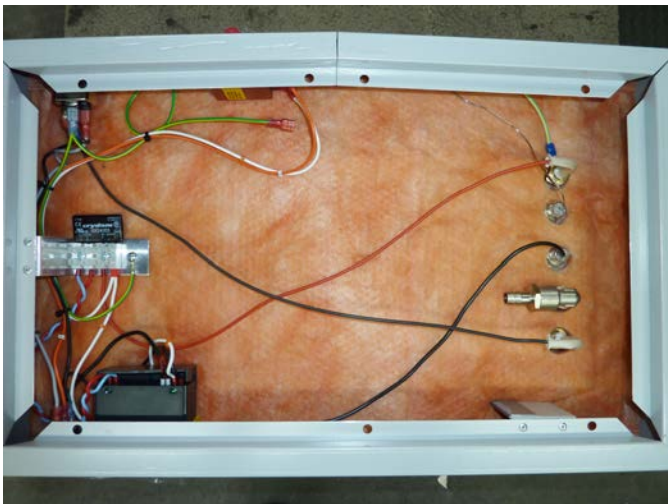


MODEL No:	TWB-12	TWB-24
ELEMENT:	500watts	900watts
CCT.BKR:	10 Amps	10 Amps
WIRE SIZE:	1.0 sq,mm V105	1.0 sq,mm V105

PRODUCT:	BATHS:UNCIRCULATED, DIGITAL.	07-12-18: Changed Main (Rocker) Switch.
MODELS:	TWB-12, TWB-24.	19-10-16: Changed from adjustable safety to fixed thermostat @ 120C
DRAWING No:	TWB 12, & 24 WIRING DIAGRAM	27-3-12: 10 amp main switch.
DESCRIPTION:	WIRING DIAGRAM FOR UNCIRCULATED BATHS DIGITAL CONTROL, MANUAL RESET T/STAT STD.	15-2-11: Changed mains wiring to manual reset thermostat.
ISSUE DATE:	07-12-18	10/5/10: Removed TWB-48 from drawing because of changes to SSR.



Once the wiring has been reattached the back plate can be replaced.



Reattach the base of the bath with the screws removed earlier.

Section 4: Power ON

Plug the bath in, refill with water and then turn the bath on and set it to the required temperature

Section 5: Support and Contact

Repair and Support is available over the telephone Monday through Thursday from 8:30am to 4pm and Friday 8:30am to 2pm. Please contact service@thermoline.com.au for email technical support.

You can also visit our website at www.thermoline.com.au for access to additional useful troubleshooting guides, operating manuals, and technical information.

Thermoline Scientific Equipment
10-12 Ross Place
Wetherill Park NSW 2164
Ph: 02 9604 3911
Email: hello@thermoline.com.au
Web: www.thermoline.com.au

