

## Repair Instructions

Replace Lithium Batteries in a Humiditherm and Climatron Cabinets



To suit: Climatron, TRH, TRHDL TRHSL, TEC cabinets

Approvals		
Written By:	Reviewed By:	Approved By:
Darren Assey	Darren Assey	Duncan Smeaton

## Safety Reminder

These instructions do not purport to address all potential safety issues, if any, associated with the product's use. It is the responsibility of the user of these instructions to establish appropriate safety and health practices and determine the applicability of regulatory limitations before use.

Before attempting any of the following, perform the actions listed below:

- Turn OFF power to the machine.
- Unplug the machine.

All work should be carried out by a suitably qualified electrical contractor.

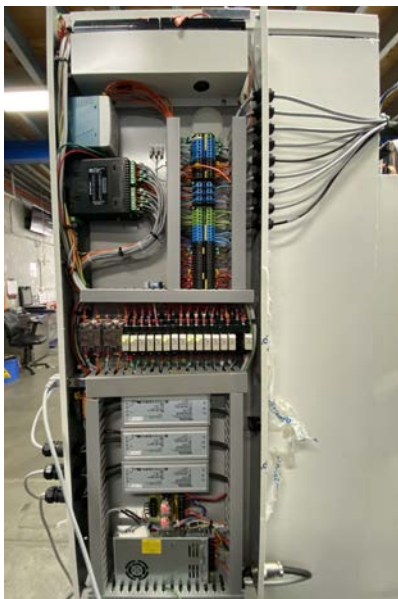
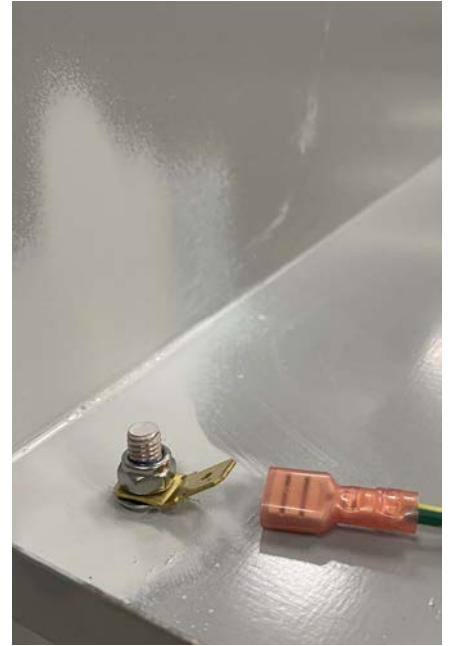
## Summary

These instructions describe how to replace the lithium back up batteries in a Humiditherm and Climatron cabinet.

Tools Required	
Phillips head screw driver	

Kit Contents		
Item	Description	Quantity
70320	AGM Battery 12V 9AH	2

## Section 1: Preparation



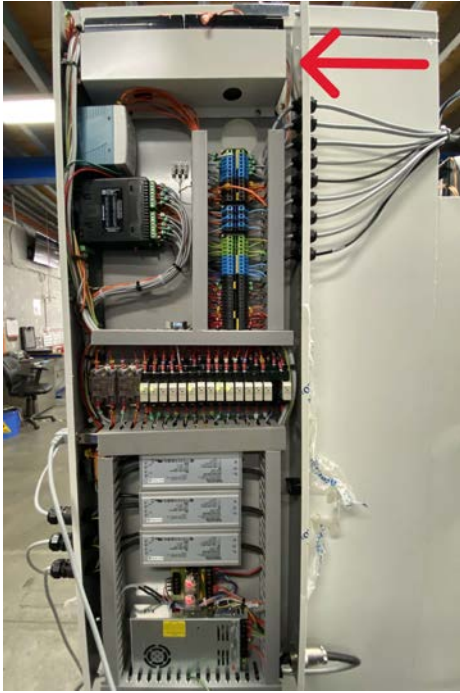
Back of Climatron



Back of Humiditherm

Shut down the chamber as per the directions outlined in the user manual ([link below](#)). Unplug the cabinet from the mains. Remove the electrical box cover (six screws) and disconnect the earth. The earth spade connector is located at the bottom of the electrical box.

[User manual link](#)



Battery location in a Climatron



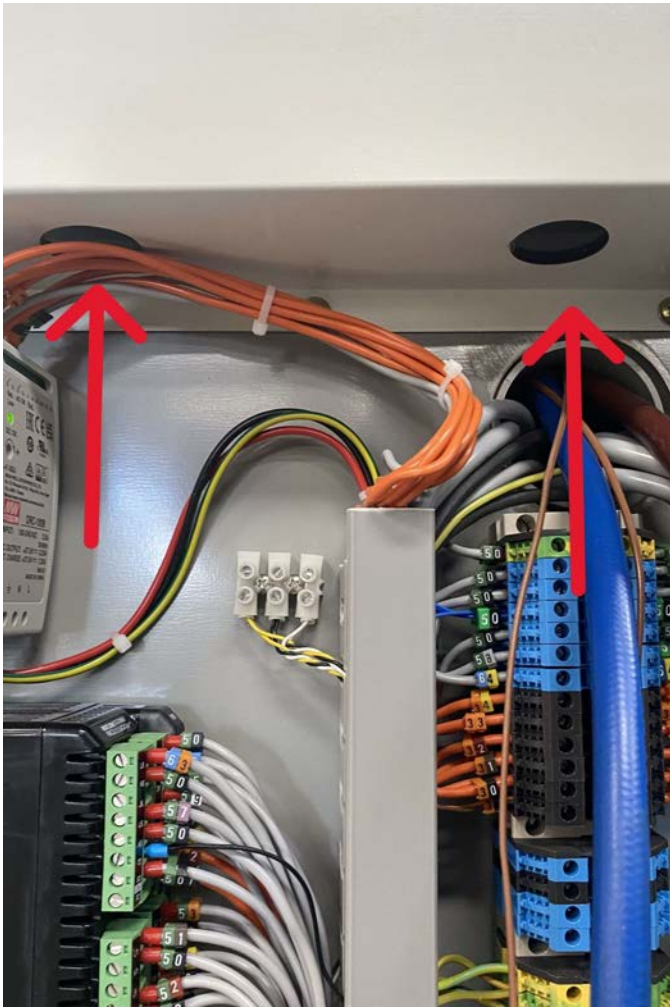
Battery location in a Humiditherm

Once the cover on the electrical box has been removed, you will be able to access the batteries. The batteries are located at the top of the electrical box in a stand-alone bracket (shown in the above pictures).

## Section 2: Remove the Batteries

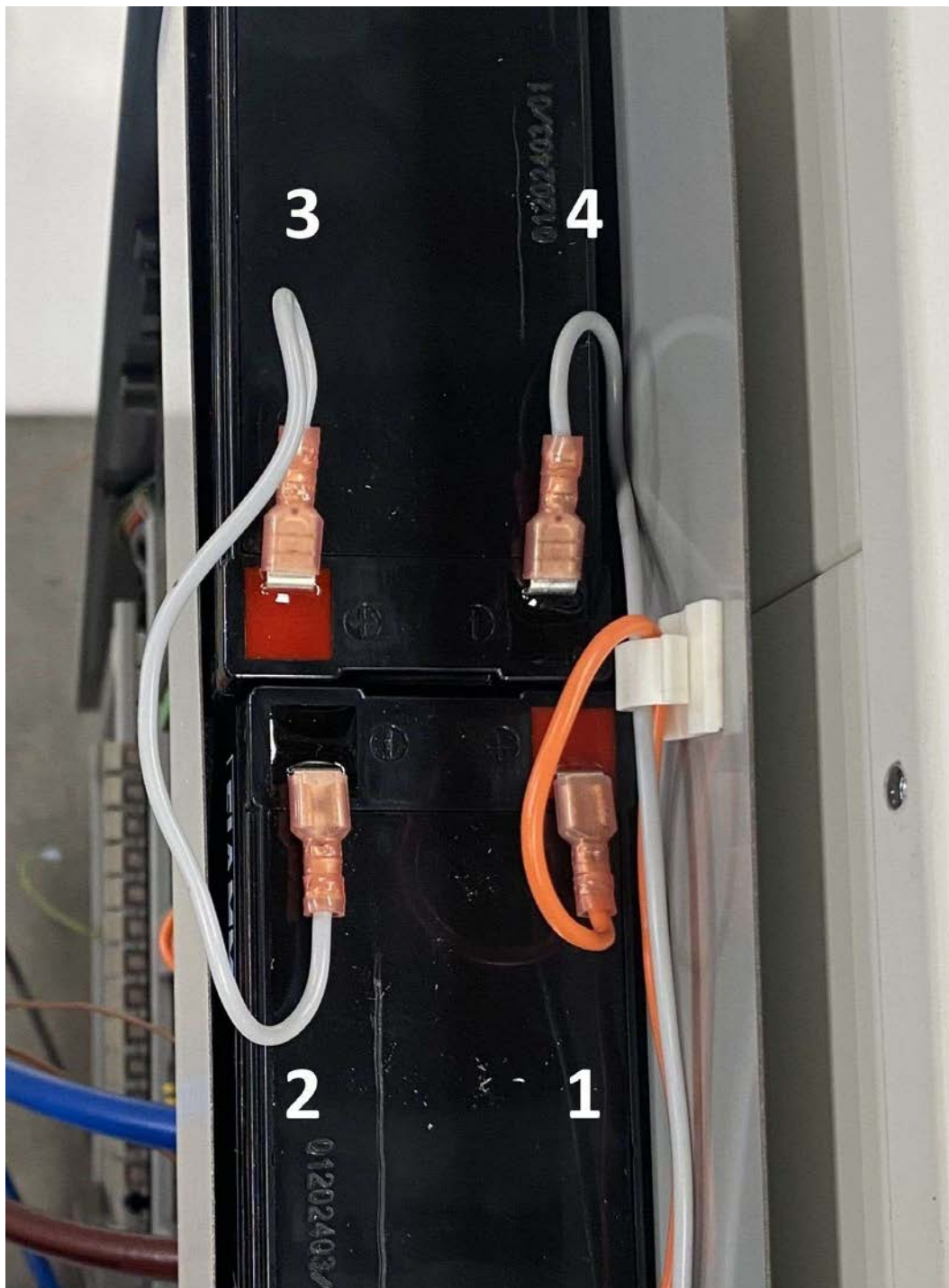


Disconnect the spade clips from the battery terminals. Please set aside the smaller grey wire, as you will need it to connect the two new batteries in series.



Once the batteries have been disconnected, they can simply be removed by first pushing them up using the access hole underneath the bracket. This will allow for a better grip on the top of the battery to slide it past the white plastic wire clips and completely remove it.

### Section 3: Installation



Insert the new batteries into the bracket with the spade terminals in the middle facing one another. This allows the new batteries to be connected in series. The above picture shows the connection orientation.

When connecting the battery connect the orange wire that is coming from the cabinet to terminal 1.

Take the shorter grey wire and connect terminal 2 and terminal 3 together.

Finally connect the grey wire that is coming from the cabinet to terminal 4.

## **Section 4: Power ON**

Power up the cabinet according to the instructions outlined in the user manual. Note that the batteries will require approximately 12 hours of running to charge when first installed.

## **Section 5: Support and Contact**

Repair and Support is available over the telephone Monday through Thursday from 8:30am to 4pm and Friday 8:30am to 2pm. Please contact [service@thermoline.com.au](mailto:service@thermoline.com.au) for email technical support. You can also visit our website at [www.thermoline.com.au](http://www.thermoline.com.au) for access to additional useful troubleshooting guides, operating manuals, and technical information.

Thermoline Scientific Equipment  
10-12 Ross Place  
Wetherill Park NSW 2164  
Ph: 02 9604 3911  
Email: [hello@thermoline.com.au](mailto:hello@thermoline.com.au)  
Web: [www.thermoline.com.au](http://www.thermoline.com.au)

